

Defining Screen Options in DataPlus® Mobile

March 11, 2016

The layout of data on the hand held screen can be modified by changing the screen type. There are three different display types Virtual, Line, and Line Align.

A Virtual screen type format is when the data is presented in a line by line and column by column format. As many columns and as many lines as will fit on the display at one time, are presented together. It becomes a virtual window into the data that moves around with the cursor.

A Line screen type format shows as many prompts and the corresponding data columns from the current data line as will fit on the display, presented in a grouped fashion.

There is now the option for Line Align which is a screen type format shows as many prompts and corresponding data columns from the current data line as will fit on the display, presented in a vertically-aligned fashion.

| Virtual | | | | Line | | | | Line Align | | | |
|----------------------------|------|-----------|-----------|------------------------|------------|--------|-----|------------------------|------------|--|--|
| Tree | Spec | TotalHght | MerchHght | Date | 05/13/2015 | | | Date | 05/13/2015 | | |
| 1 | AF | 0 | 0 | Time | 16:39:35 | | | Time | 16:45:09 | | |
| 2 | L | 0 | 0 | Region | 1 | Forest | LOL | Region | 1 | | |
| | | | | Stand | 123 | | | Forest | LOL | | |
| | | | | Cruiser | MK | Acres | 240 | Stand | 123 | | |
| | | | | | | | | Cruiser | MK | | |
| | | | | | | | | Acres | 240 | | |
| F1-Help F4-Exit F5-Advance | | | | F1-Help F4-Exit F5-Adv | | | | F1-Help F4-Exit F5-Adv | | | |

In this example our application will be for timber cruising. Please refer to the support note [Creating a Basic Application for DataPlus® Mobile](#) to create the application used in the example.



P. O. Box 31, Jerome, ID 83338

Ph: (208) 324-8006 Fax: (208) 324-8015 www.elecdata.com support@elecdata.com

Define Screens for Levels 1 and 2

Level 1

1. Open your application and select the first level.
2. Click the Screen Define under the Branch Tabs.
3. The screen below shows the settings for the default values for this level.

The screenshot shows the 'Screen Define' dialog box with the following settings:

- Application Tabs:** Branch Tabs
- Screen Type:** Line (selected), Virtual, Line Align
- Line Number Prompt:** [Empty text box]
- Help Messages:**
 - Use Individual Column Help Messages
 - Use Common Screen Message for Data File
- Screen Help Message:** F1-Help F4-Exit F5-Advance
- Other options:**
 - Use Double Prompts
 - Show Line Numbers
 - Auto Line Wrap
 - Show GPS Status

Level 2

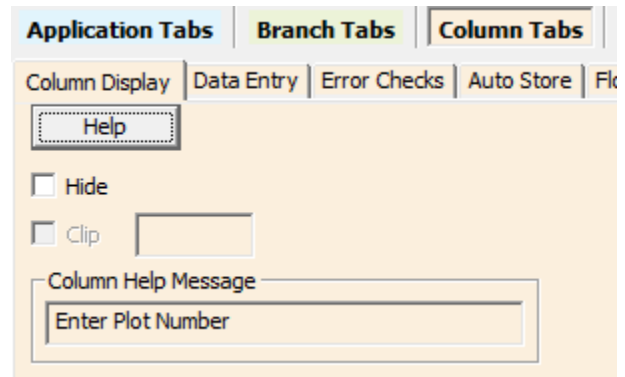
1. Select the second level in the Hierarchy window.
2. Select Line for a Screen Type. Data is defaulted to be shown in a virtual screen type format except for the first data level.
3. The Available Columns window displays level 1 and level 2 columns. Select one of the columns, such as ID number columns, from your first level in the Available Columns window.
4. Click the right arrow to move the column to the View as Line Display window. This column will be visible on the hand held when using level 2 - Plot.

The screenshot shows the 'Screen Define' dialog box with the following settings:

- Application Tabs:** Column Tabs
- Screen Type:** Line (selected), Virtual, Line Align
- Line Number Prompt:** Ln#
- Help Messages:**
 - Use Individual Column Help Messages
 - Use Common Screen Message for Data File
- Screen Help Message:** F1-Help F4-Exit F5-Advance
- Constant Column Display:**
 - Available Columns:** Stand, 'Date', Stand, 'Time', Stand, 'Region', Stand, 'Forest', Stand, 'Cruiser', Stand, 'Acres', Plot, 'Plot', Plot, 'Pt', Plot, 'Size'
 - View as Line Display:** Stand, 'Stand'
 - View as Virtual Display:** [Empty]

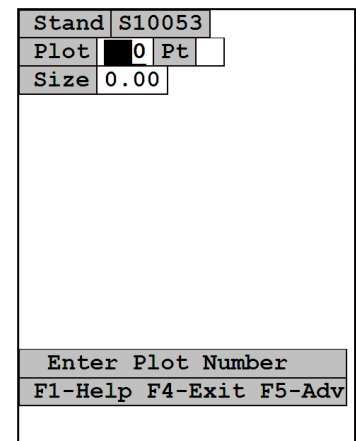
Individual Column Help

1. By default “F1-Help F4-Exit F5-Advance” should be listed in the Screen Help Message window on the Screen Define.
2. Select a column, such as ID, on your second level.
3. Check the box next Use Individual Column Help Messages. This allows column specific help messages to be entered for each column.
4. Click the Column Tabs and Column Display.
5. In the Column Help Message, enter in a message that will explain what the column is for.



Test Screens for Levels 1 and 2

1. Click the Compile button.
2. Click the Test button.
3. Click OK on the DPM Test Defaults. Press any key.
4. Enter data into each empty field in level 1.
5. Press the F5 key to move to level 2.
6. Notice the field from level 1 appears at the top of the screen. The two help messages appear at the bottom of the screen.
7. Press ENTER several times, observing changes in the upper error message.
8. Press the F4 or Esc/Y until you return to the Application Generator.



Level 2- Plot

Line Screen Type

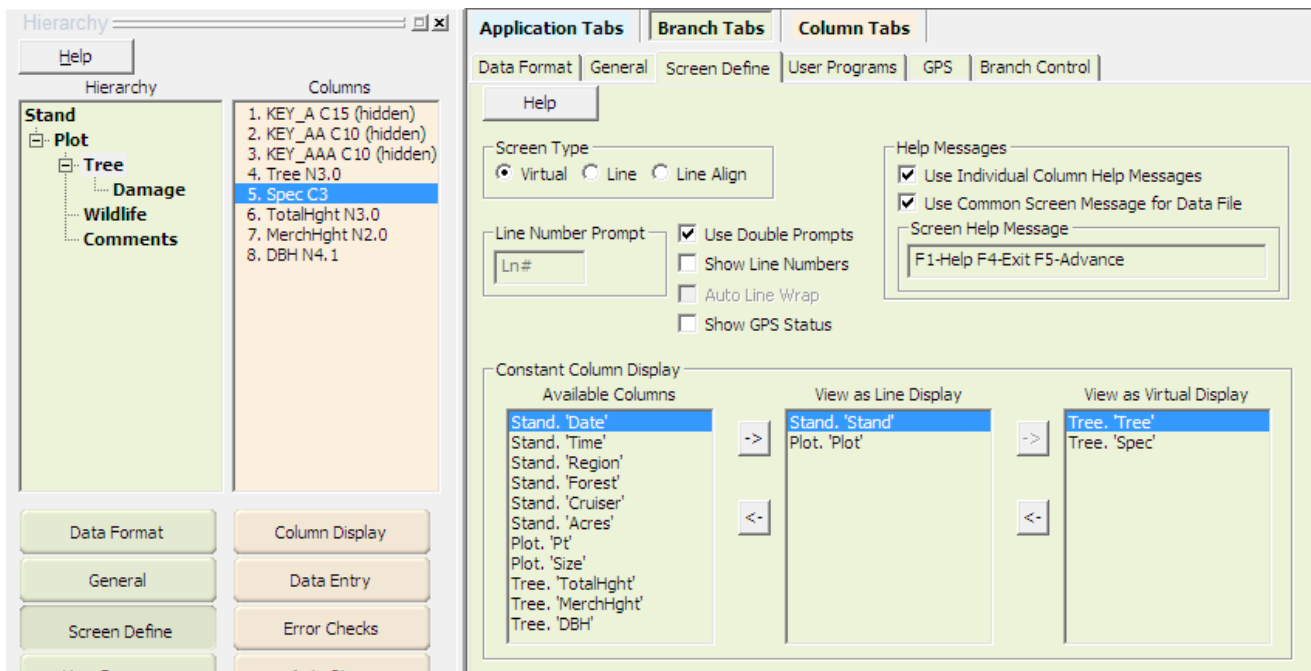
Define Screens for Levels 3 and 4

In this application, the first two levels use a line display. Levels 3 and 4 will use a virtual display.

Level 3 and 4

1. Select the third or fourth level in the Hierarchy window.
2. Click the Screen Define under the Branch Tabs.
3. Change Screen Type to Virtual.
4. Select Use Double Prompts.
5. In Constant Column Display, move columns from levels one and two to help you identify where you are to the View as Line Display window by clicking the right arrow.
6. Any columns from the same level that will need to be constantly viewed as you move across the virtual screen, use the second right arrow to move the column to the View as Virtual Display window.
7. Select Use Individual Column Help Messages as needed.

Note: If one of your levels is a long text column, such as a comments column, make sure to check the box next to Auto Line Wrap.



Test Screens for Levels 3 and 4

1. Click the Compile button.
2. Click the Test button.
3. Click OK on the DPM Test Defaults. Press any key.
4. Enter data into each empty field in level 1 and level 2.
5. In level 3, notice that the fields from level one and two are at the top of the screen.
6. Use the right arrow to move across the virtual screen.
7. Notice how the level 3 columns we moved to constant view on virtual screen are staying on the left side on the screen.

| Stand | S10053 | Plot | 1 |
|------------------------|--------|-----------|---|
| Tree | Spec | TotalHght | |
| 2 | LPP | 0 | |
| F1-Help F4-Exit F5-Adv | | | |

| Stand | S10053 | Plot | 1 |
|------------------------|--------|-----------|---|
| Tree | Spec | MerchHght | |
| 2 | LPP | 0 | |
| F1-Help F4-Exit F5-Adv | | | |

Level 3- Tree

Virtual Screen Type