

Relating Error Check Files in DataPlus® Mobile

April 21, 2016

Relating error check files is a way of associating an error check file to a string, value, or range from another column. That column is called the Relate to Source Column. A Relate Source column has to be from direct ancestry or a column from the current file. There are two relate types, List and Range.

Any type of error check file may be related. When the error check is performed, The actual data that is stored in the Relate Source Column is checked against the valid entries defined in the relate file. If a match is found, the last column in the relate file contains the error check file name to be used for making the error check. A Separate Error Check File Name is required for each valid entry or range of the relate file. The same error check file name can be used for more than one relate valid entry.

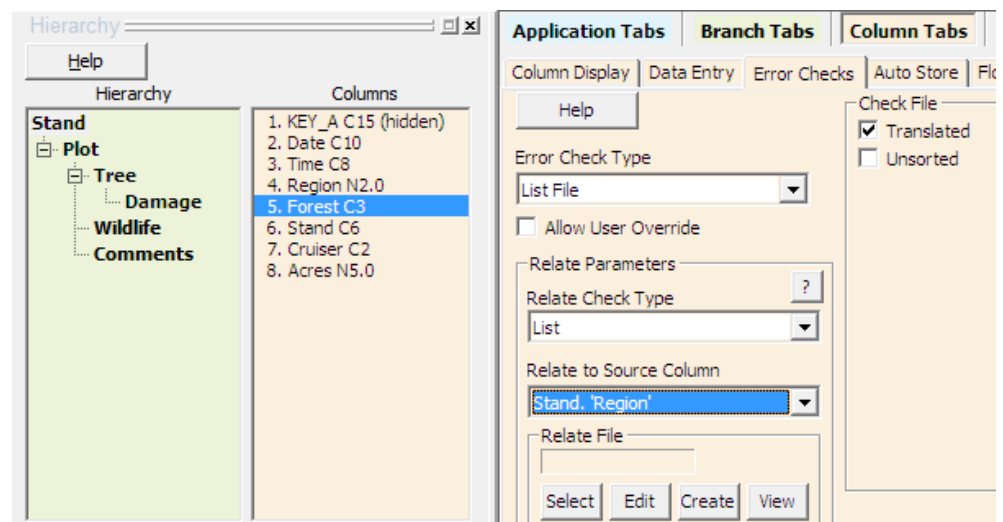
In brief, a relate file is a list of Error Check Files Names to be used for making the error check based on the data present in another column.

We will be using the Forestry App created in the [Creating a Basic Application for DataPlus Mobile](#) and the [Basic Error Checks for DataPlus Mobile](#) will need to be done before relating errors can be done.

Forest Error Check Files

Files will be created listing the names of forests. Because each region has its own unique forests within it, we can relate the Forest error check to the data entered in the Region column. This will ensure that only forests from the selected region may be entered. A list file containing the appropriate forests will be created for each region in the Region list file created in Lesson 4, page 24. These will be translated list so a code can be entered to store the abbreviation of the forest.

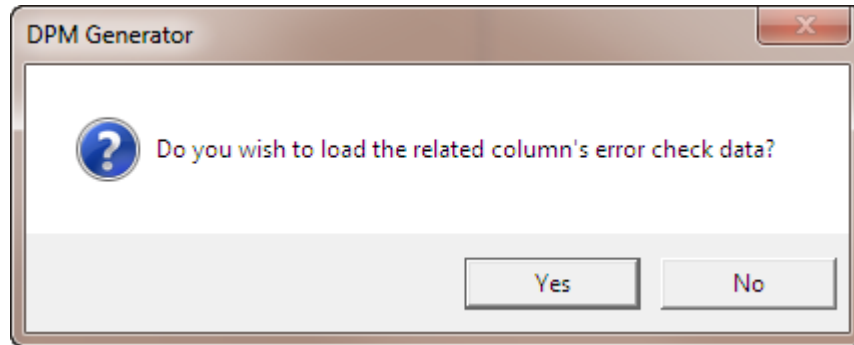
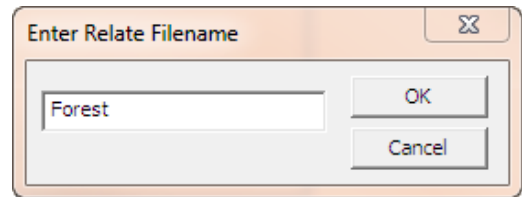
1. Verify that Stand is selected in the Hierarchy window. Select Forest in the Columns window.
2. Select the Error Checks under Column Tabs.
3. Click on the down arrow for Error Check Type and select List File.
4. Click on the Translated box.
5. Click on the down arrow for Relate Check Type and select List. A file listing forests will be created for each region.
6. Click on the down arrow for Relate to Source Column and select Stand.'Region'.



P. O. Box 31, Jerome, ID 83338

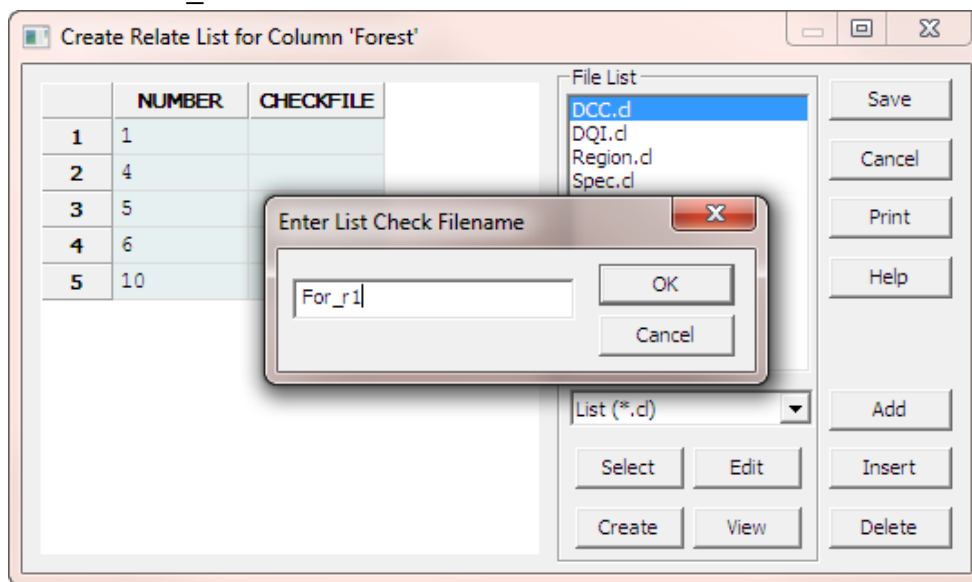
Ph: (208) 324-8006 Fax: (208) 324-8015 www.elecdata.com support@elecdata.com

4. Click the Create button.
5. Click OK to accept Forest as the Relate file name.
6. Click Yes to load error check data from the Region column. This will load all of the Region options so the appropriate error check file can be created for each region.

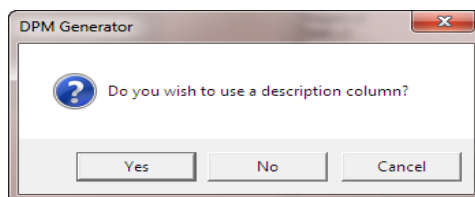


The Create Relate List for Column 'Forest' screen appears with the NUMBER column already loaded from the Region list file. The CHECKFILE column will contain the file names of associated lists of forests for each region. There will be five lists, one for each region.

10. Click Create and enter For_r1 as the first list file name.

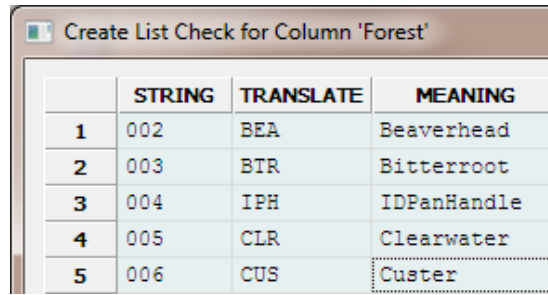


11. Click OK.
12. Click Yes to use a description column.

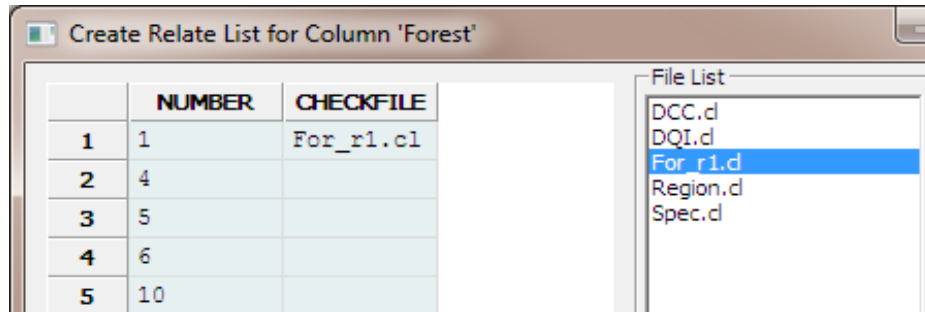


13. Key in the first five rows.

14. Click Save.



	STRING	TRANSLATE	MEANING
1	002	BEA	Beaverhead
2	003	BTR	Bitterroot
3	004	IPH	IDPanHandle
4	005	CLR	Clearwater
5	006	CUS	Custer



	NUMBER	CHECKFILE
1	1	For_r1.c1
2	4	
3	5	
4	6	
5	10	

File List

- DCC.d
- DQI.d
- For_r1.d
- Region.d
- Spec.d

The list file name is shown in the CHECKFILE column and also in the File List window.

15. Press the down arrow to CHECKFILE record 2.

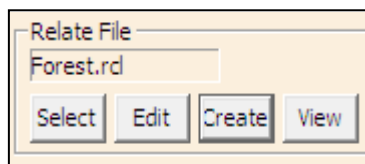
16. Start creating the remaining check files based on the figures on the next page.

17. Click Save. The relate file is stored as Forest.rcl.

	NUMBER	CHECKFILE
1	1	For_r1.c1
2	4	For_r4.c1
3	5	For_r5.c1
4	6	For_r6.c1
5	10	For_r10.c1

18. To edit the relate file click Edit on the Error Checks tab.

19. To edit a related list file, select the file in the File List window and click Edit.



For_r1

	STRING	TRANSLATE	MEANING
1	002	BEA	Beaverhead
2	003	BTR	Bitterroot
3	004	IPH	IDPanHandl
4	005	CLR	Clearwater
5	006	CUS	Custer
6	009	DRL	Deer Lodge
7	010	FLH	Flat Head
8	011	GAL	Gallatin
9	012	HEL	Helena
10	014	KOO	Kootnai
11	015	LWC	Lewis&Clar
12	016	LOL	Lolo
13	017	NEZ	Nez Pierce

For_r4

	STRING	TRANSLATE	MEANING
1	001	ASH	Ashley
2	002	BOI	Boise
3	003	BT	Bridger-Teton
4	005	CAR	Caribou
5	006	CHA	Challis
6	007	DIX	Dixie
7	008	FIS	Fishlake
8	009	HUM	Humbolt
9	010	MAN	Manti-Lasal
10	012	PAY	Payette
11	013	SAL	Salmon
12	014	SAW	Sawtooth
13	015	TAR	Targhee
14	017	TOI	Toiyabe
15	018	UIN	Uinta

For_r5

	STRING	TRANSLATE	MEANING
1	001	ANF	Angeles NF
2	002	CNF	Cleveland NF
3	003	ENF	El Dorado NF
4	004	INF	Inyo NF
5	005	KNF	Klamath NF
6	006	LNF	Lassen NF
7	007	LPF	Las Padres NF
8	008	MNF	Mendocino NF
9	009	MDF	Modoc NF
10	010	SRF	Six Rivers NF
11	011	PNF	Plumas NF
12	012	BDF	SanBernadinoNF
13	013	SQF	Sequoia NF
14	014	SHF	Shasta-Trinity
15	015	SNF	Sierra NF

For_r6

	STRING	TRANSLATE	MEANING
1	001	DES	Deschutes
2	002	FRE	Fremont
3	003	GIP	Gifford Pinch
4	004	MAL	Malheur
5	005	MBS	Mt.Baker-Snog
6	006	MTH	Mt. Hood
7	007	OCH	Ochoco
8	008	OKA	Okanogan
9	009	OLY	Olympic
10	010	ROR	Rogue River
11	011	SIS	Sikiyou
12	012	SIU	Siuslaw
13	014	UMA	Umatilla
14	015	UMP	Umpqua
15	016	WAW	Wallowa-WhitM

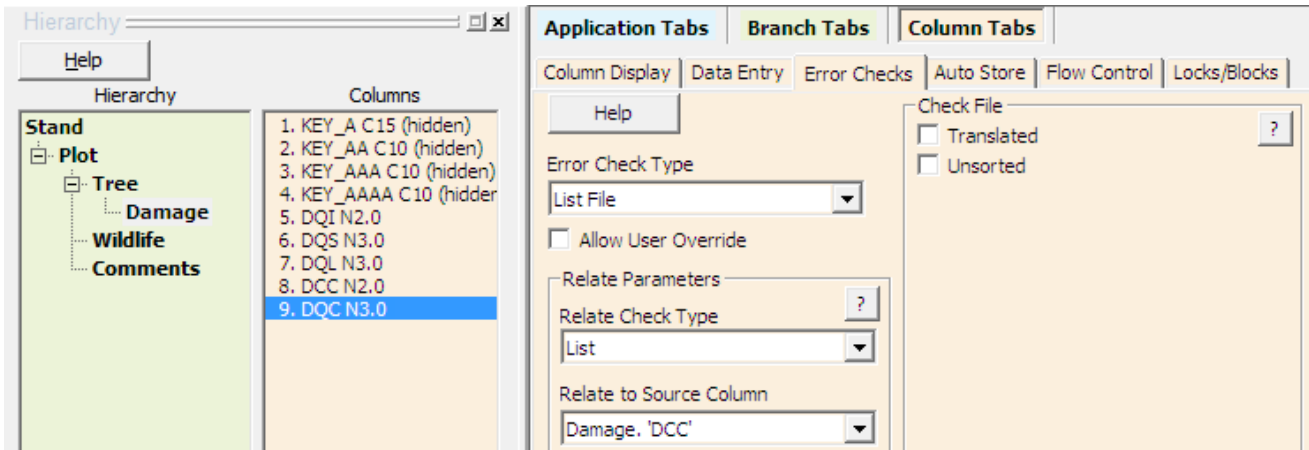
For_r10

	STRING	TRANSLATE	MEANING
1	001	CHA	Chatham
2	002	STI	Stikine
3	003	KET	Ketichikan

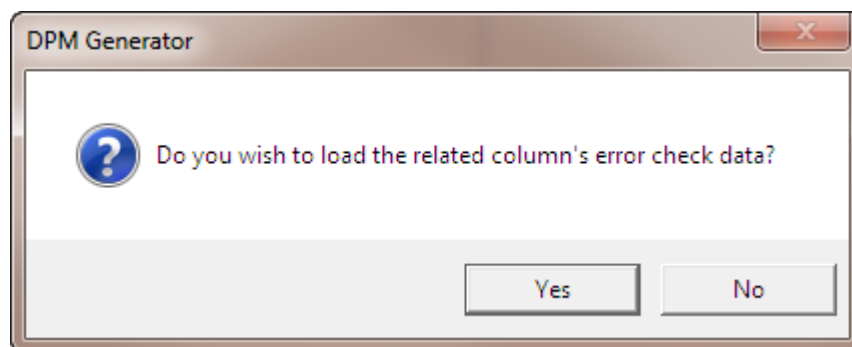
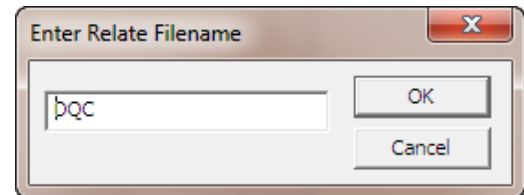
Damage Error Check Files

Files will be created listing types of damage for each category. Each file will relate to a line in the **DCC** list file created in Lesson 4, page 25.

1. Select Damage in the Hierarchy window and DQC in the Columns window.
2. Select the Error Checks under Column Tabs.
3. Click the down arrow for Error Check Type and select List File.
4. Click the down arrow for Relate Check Type and select List. A file listing forests will be created for each region.
5. Click the down arrow for Relate to Source Column and select Damage.'DCC'.

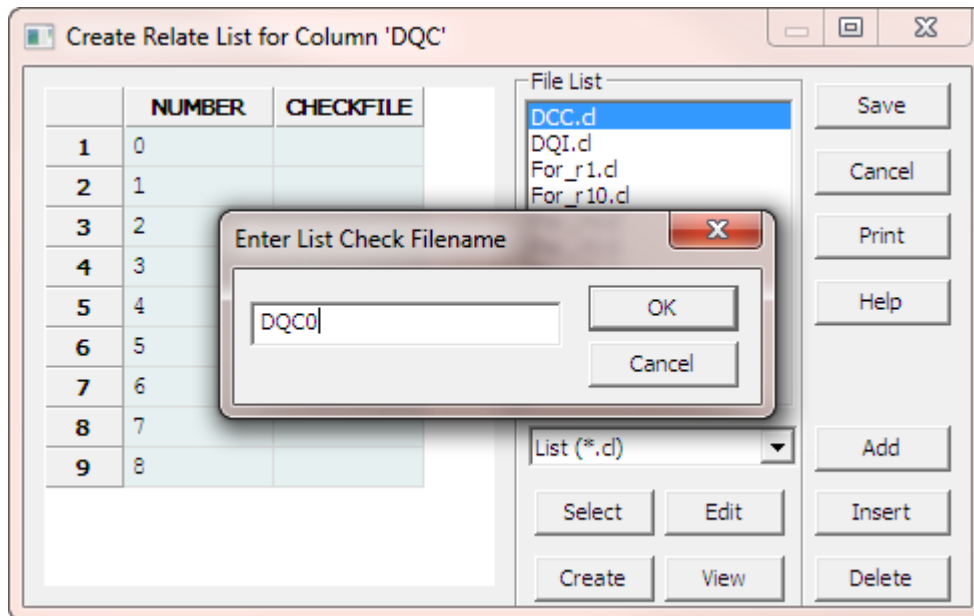


6. Click the Create button.
7. Click OK to accept DQC as the relate file name.
8. Click Yes to load error check data from the DCC column.



The Create Relate List for Column 'DQC' screen appears with the NUMBER column already loaded from the DCC list file. Each row represents a category. For each category, a file will be created listing possible causes of damage. The CHECKFILE column will have the file names of these lists.

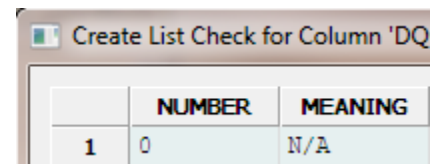
9. Click Create and enter DQC0 as the first list file name.



10. Click OK.

11. Click Yes to use a description column.

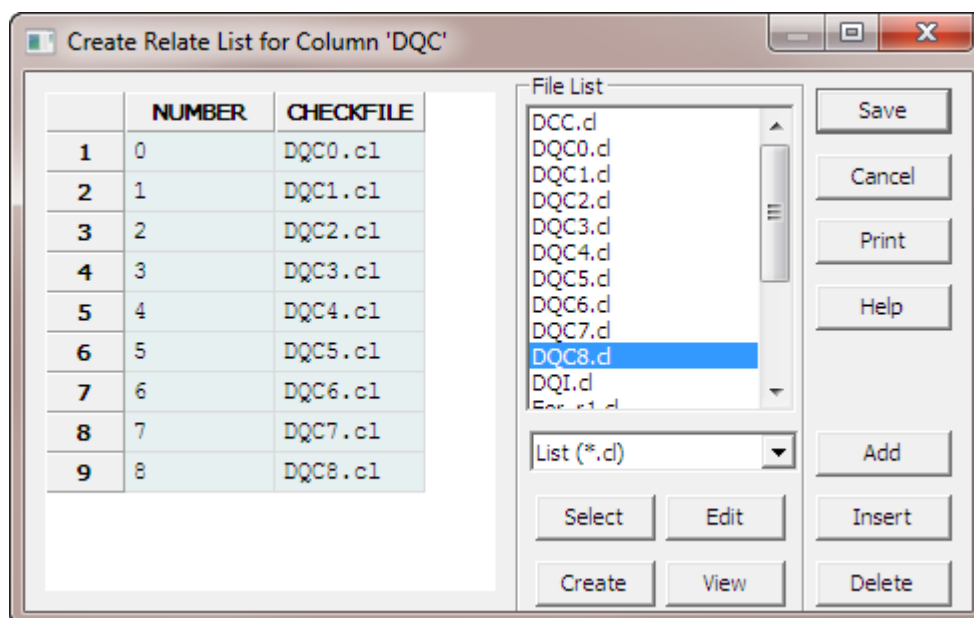
12. Start creating a file listing damages for category 1. Type "0" in the NUMBER column and "N/A" in the MEANING column.



13. Click Save.

14. Press the down arrow in the DQC file to record 2.

15. Start creating the remaining check files based on the figures below.



16. Click Save. The relate file is stored as DQC.rcl.

17. To edit the relate file, click Edit on the Error Checks tab.

18. To edit a related list file, select the file in the File List window and click Edit.

DQC1

	NUMBER	MEANING
1	1	Bear
2	2	Deer
3	3	Elk
4	4	Porcupine
5	5	Rabbit
6	6	Beaver
7	7	Livestock
8	8	Cattle
9	9	Rodents

DQC2

	NUMBER	MEANING
1	10	Weed Competition
2	11	Component
3	12	Understory
4	13	Overstory

DQC3

	NUMBER	MEANING
1	14	Unspecified Fungus
2	15	Fomes Pini
3	16	Fomes Laricis
4	17	Indian Paint
5	18	Sap Rot
6	19	Top Rot
7	20	Cubical Root Rot
8	21	Fomes Annosus
9	22	Poria/Phellinus
10	23	Cronartium r.
11	24	Cronartium h.
12	25	Mistletoe
13	26	Swiss Needle Cast
14	27	Botritis
15	28	Septoria

DQC4

	NUMBER	MEANING
1	29	Bark Beetle
2	30	Tip Weevil
3	31	Pales Weevil
4	32	Shoot Weevil
5	33	Woolly Aphid
6	34	Spruce Bud Worm
7	35	Defoliators
8	36	Spruce Weevil
9	37	Aphids
10	38	Big Bud
11	39	Moth

DQC5

	NUMBER	MEANING
1	40	Fire
2	41	Natural
3	42	Silvicultural
4	43	Nursery Lifting
5	44	Planting Error

DQC6

	NUMBER	MEANING
1	55	Herbicide
2	56	Nutritional
3	57	Genetic
4	58	Landform

DQC7

	NUMBER	MEANING
1	59	Unspecified
2	60	Unassessed

DQC8

	NUMBER	MEANING
1	46	Frost
2	47	Snow & Ice
3	48	Sun
4	49	Lightning
5	50	Desiccation
6	51	Wind
7	52	Flooding
8	53	Spray Damage
9	54	Salt Intrusion

Test Related Error Check Files

1. Click the Compile button.
2. Click the Test button.
3. Click OK on the DPM Test Defaults. Press any key.
4. Verify that Region is selected.
5. Press F2. A list of choices appears.
6. Press ENTER to select Region 1.
7. Verify that Forest is selected.
8. Press F2. A list of forests for Region 1 appears.
9. Select forest and press ENTER.
10. Repeat steps 4 – 8 several times, selecting other regions. Observe how a different list of forests appears for each region.

Date	05/22/2015	
Time	07:49:43	
Region	5	
Forest		
Stand		
Cruiser	Acres	0

NU	MEANING
1	Region 1
4	Region 4
5	Region 5
6	Region 6
10	Region 10

< Choices:5 >

F1-Help F4-Exit F5-Advance

Date	05/22/2015	
Time	07:49:43	
Region	5	
Forest		
Stand		
Cruiser	Acres	0

STR	TRA	MEANING
002	BEA	Beaverhead
003	BTR	Bitterroot
004	IPH	IDPanHandle
005	CLR	Clearwater
006	CUS	Custer
009	DRL	Deer Lodge
010	FLH	Flat Head
011	GAL	Gallatin
012	HEL	Helena
014	KOO	Kootnai
015	LWC	Lewis&Clark
016	LOL	Lolo
017	NEZ	Nez Pierce

< Choices:13 >

F1-Help F4-Exit F5-Advance

11. Type data into the Stand field.
12. Press the F5 key to move to level 2.
13. Type a Plot number.
14. Press the F5 key to move to level 3. Press ENTER to select Tree.
15. Type a Tree number.
16. Press the F5 key to move to Damage level 4.
17. Press F2 for a DQI list.
18. Select a damage indicator code and press ENTER.
19. Press ENTER twice to move to the DCC field.
20. Press F2 for a DCC list.

22. Select a damage category code and press **ENTER**.
23. Press **F2** for a corresponding **DQC** list.
24. Select a code and press **ENTER**.
25. Press the down arrow to add a new line.

Plot	1	Tree	1	Spec	
MerchHght	0				
DQI	DQS	DQL	DCC	DQC	
1	NUM MEANING				
	0	N/A			
	1	Animal			
	2	Competition			
	3	Disease			
	4	Insect			
	5	Mechanical			
	6	Other			
	7	Unknown			
	8	Weather			
< Choices: 9 >					
Damage Category (F2)					

Plot	1	Tree	1	Spec	
MerchHght	0				
DQI	DQS	DQL	DCC	DQC	
1	NUM MEANING				
	1	Bear			
	2	Deer			
	3	Elk			
	4	Porcupine			
	5	Rabbit			
	6	Beaver			
	7	Livestock			
	8	Cattle			
	9	Rodents			
< Choices: 9 >					
Cause of Damage (F2)					

26. Press **ENTER** three times to move to the **DCC** field.
27. Repeat steps 19 – 24 several times, selecting other **DCC** codes. Observe how different corresponding **DQC** lists appear.
28. Press **F4** or **Esc/Y** until you return to the Application Generator.
29. Click **Application/Exit** to save application **CRUISE** and close the Application Generator.